

Swahili

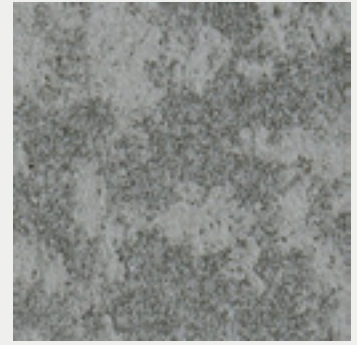




SWS 18000



SWS 18005



SWS 18010



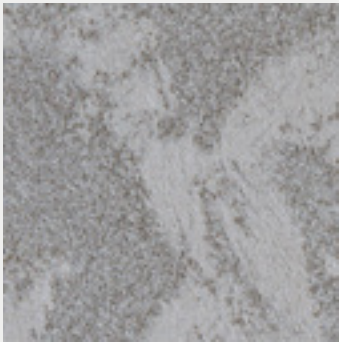
SWS 18001



SWS 18006



SWS 18011



SWS 18002



SWS 18007



SWS 18012



SWS 18003



SWS 18008



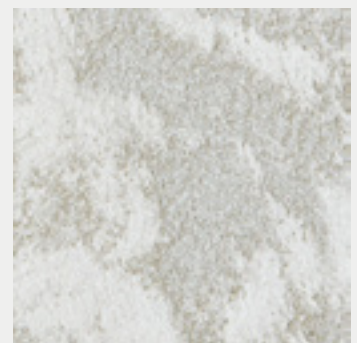
SWS 18013



SWS 18004



SWS 18009



SWS 18014

Swahili



Swahili

Rivestimento decorativo testurizzato per interni ad effetto metallizzato oro, argento e extra white

Applicare SWAHILI con pennello "spalter", in uno o due strati. Il prodotto può essere diluito con massimo 20% di acqua in funzione dell'effetto estetico desiderato. Resa: 6-7 m²/l. Per maggiori informazioni consultare la scheda tecnica.

Decorative textured interior trowel-on coating with gold, silver and extra white metallic patterns

Apply SWAHILI with "spalter" brush, in one or two layers. The product can be diluted with maximum 20% of water according to the desired effect. Yield: 6-7 m²/l. For further information please check the technical data sheet.

Revêtement décoratif texturisé pour intérieurs à effet métallisé or, argent et extra blanc

Appliquer SWAHILI avec pinceau type "spalter" en une ou deux couches. Le produit peut être dilué avec 20% d'eau maximum, en fonction de l'effet esthétique désiré. Rendement: 6-7 m²/l. Pour plus d'informations consulter la fiche technique.

Texturierte dekorative Innenwandbeschichtung mit metallisiertem Gold, Silver und Extra Weiß Effekt

Eine oder zwei Schichten SWAHILI, mit einem „Spalter Pinsel“ auftragen. Das Produkt kann je nach dem gewünschten ästhetischen Effekt mit bis zu 20% Wasser verdünnt werden. Ergiebigkeit: 6-7 m²/l in zwei Schichten. Für weitere Info bitte siehe technisches Merkblatt.



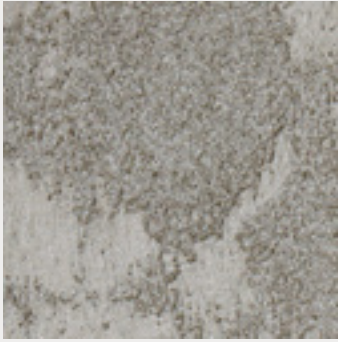


SWAHILI BASE GOLD

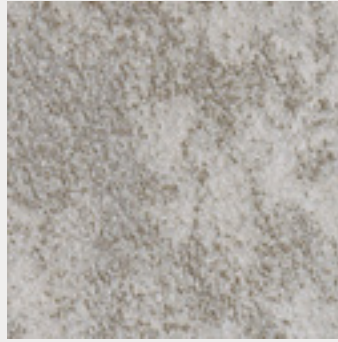


SWAHILI EXTRA WHITE

Le tonalità qui riprodotte, pur avvicinandosi a quelle di fornitura, sono indicative. Per una corretta lettura dei colori si raccomanda di consultare questa cartella alla luce solare.
Colours and patterns illustrated are for guidance only. The exact pattern, colours and shades may vary from those shown.



SWS 18015



SWS 18020



SWS 18025



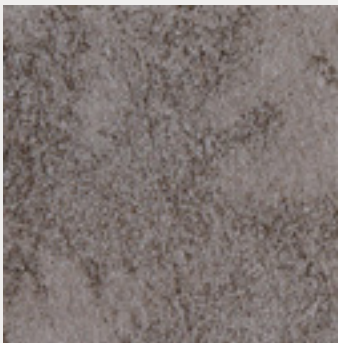
SWS 18016



SWS 18021



SWS 18026



SWS 18017



SWS 18022



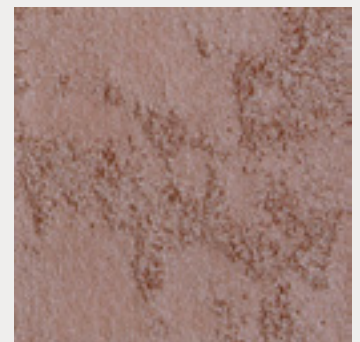
SWS 18027



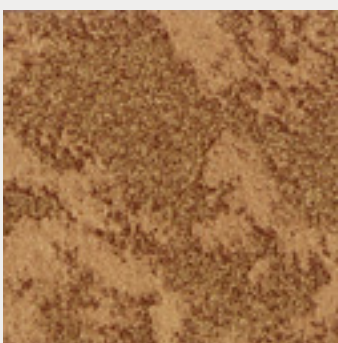
SWS 18018



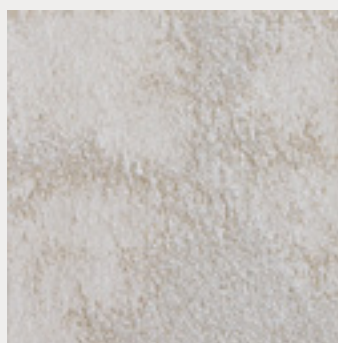
SWS 18023



SWS 18028



SWG 18019



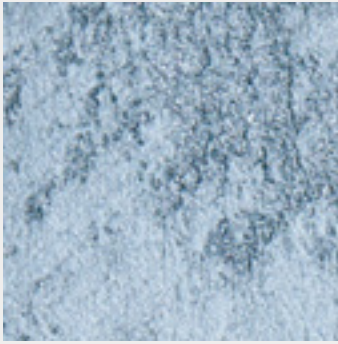
SWS 18024



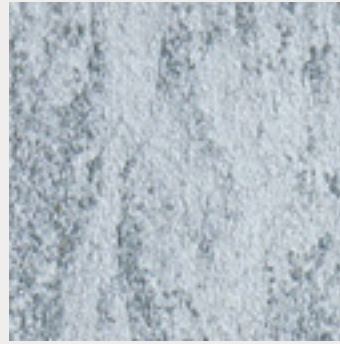
SWS 18029

Swahili

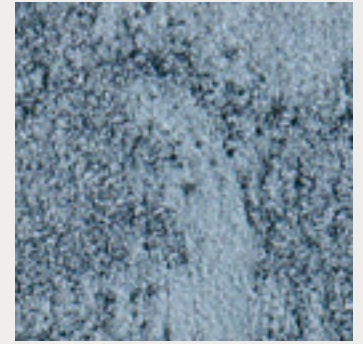




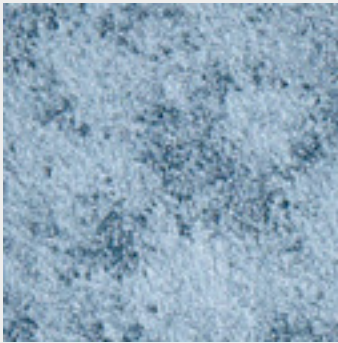
SWS 18030



SWS 18035



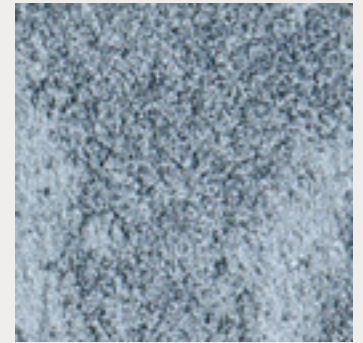
SWS 18040



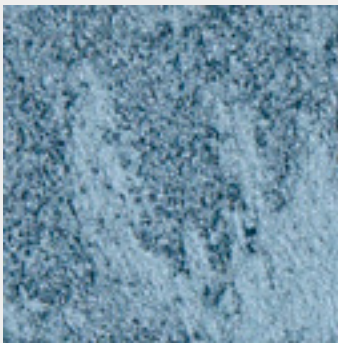
SWS 18031



SWS 18036



SWS 18041



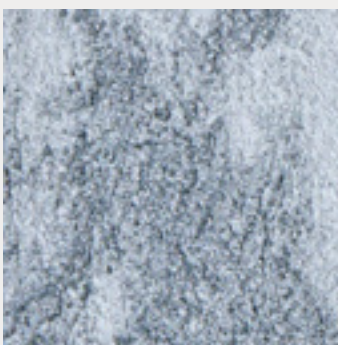
SWS 18032



SWS 18037



SWAHILI SILVER



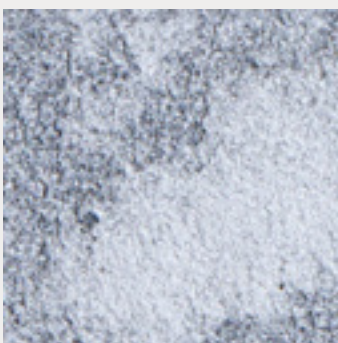
SWS 18033



SWS 18038



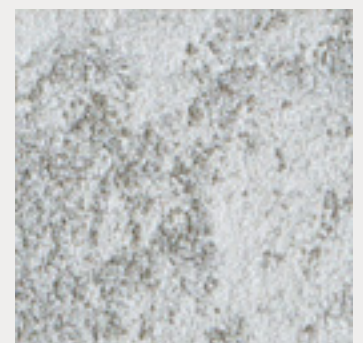
SWS 18042



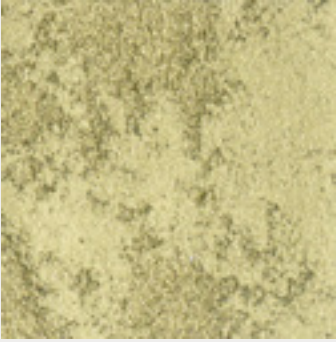
SWS 18034



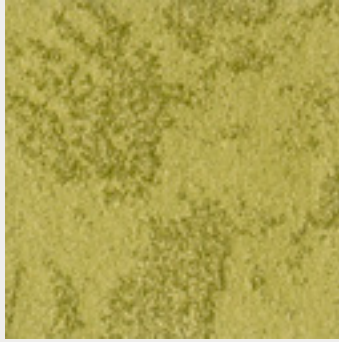
SWS 18039



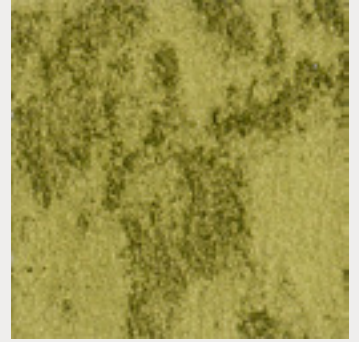
SWS 18043



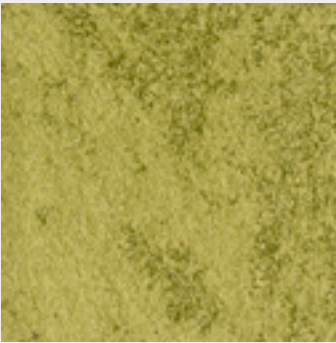
SWG 18044



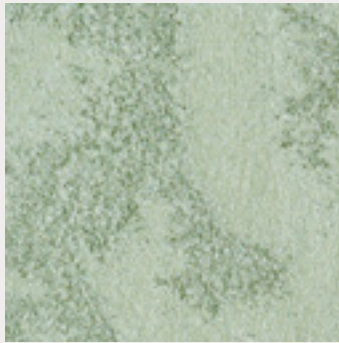
SWG 18049



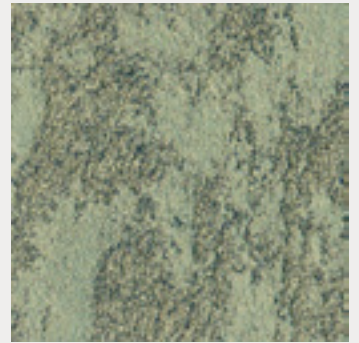
SWG 18054



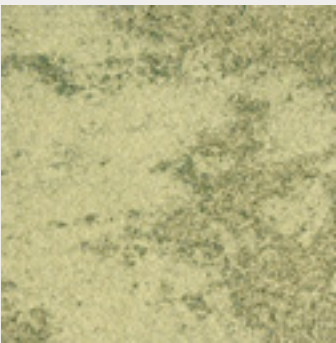
SWG 18045



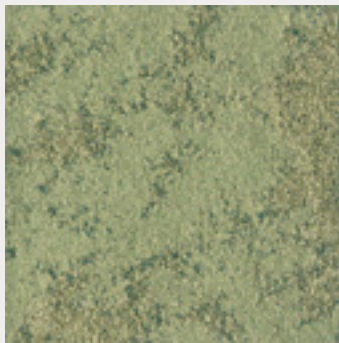
SWG 18050



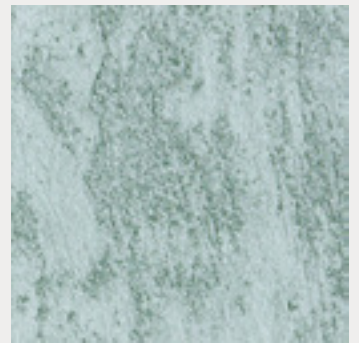
SWG 18055



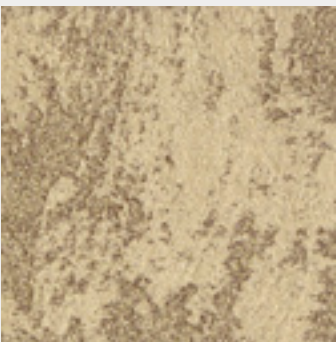
SWG 18046



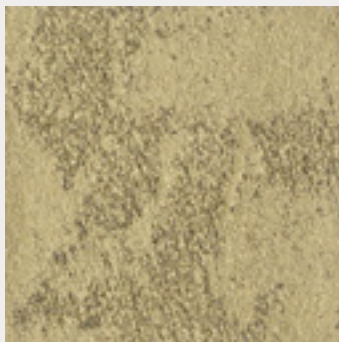
SWG 18051



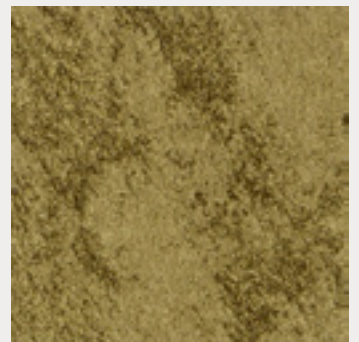
SWG 18056



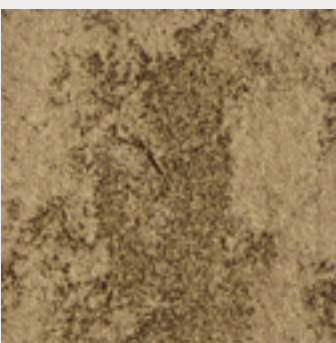
SWG 18047



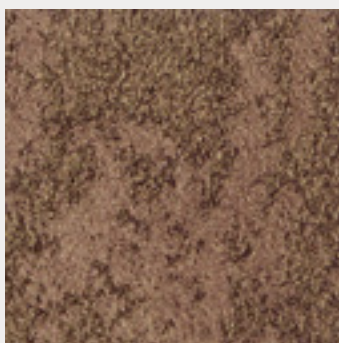
SWG 18052



SWG 18057



SWG 18048

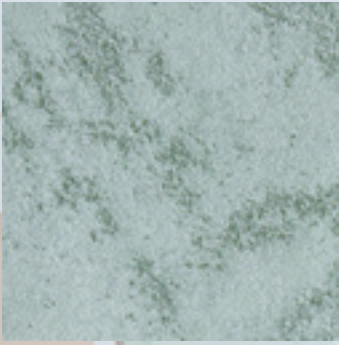


SWG 18053



SWG 18058

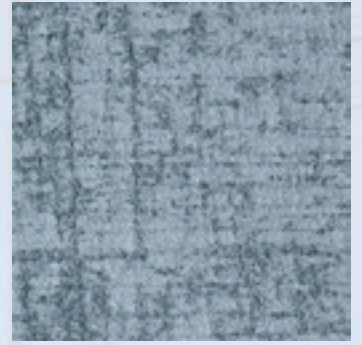




SWS 18059



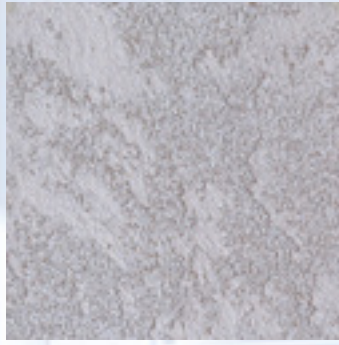
SWS 18062



TARTAN EFFECT
SWS 18065 SU/ON BASIS 18065



SWS 18060



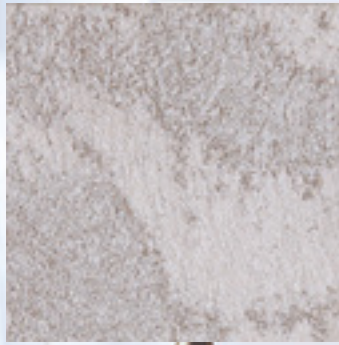
SWS 18063



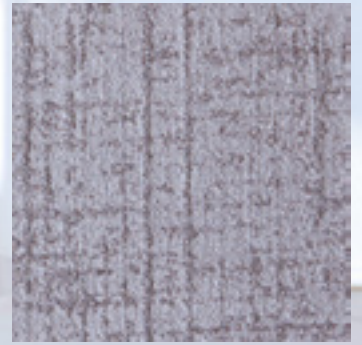
TARTAN EFFECT
SWS 18066 SU/ON BASIS 18066



SWS 18061



SWS 18064



TARTAN EFFECT
SWS 18067 SU/ON BASIS 18067



www.novacolor.it



freedot

03/2018

N000082

novacolorTM
I colori dell'Architettura

NOVACOLOR srl - 47122 Forlì - Italia
Tel +39 0543 401840 - fax +39 0543 414585
Via U. Aldrovandi, 10 - info@novacolor.it



NOVACOLOR is committed to reduce the environmental impact by producing friendly materials.

Made in Italy

**AZIENDA CON SISTEMA
DI GESTIONE QUALITÀ
CERTIFICATO DA DNV GL
= ISO 9001 =**

**COMPANY WITH
QUALITY SYSTEM
CERTIFIED BY DNV GL
= ISO 9001 =**