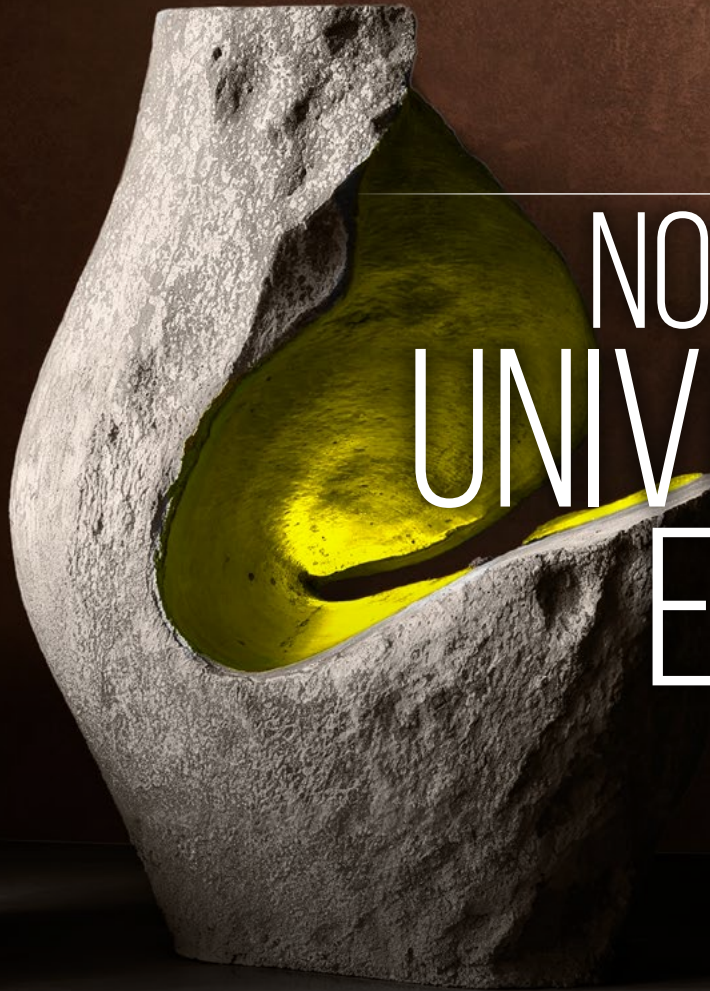




2026
NOVACOLOR
UNIVERSITY
EXPORT





INDEX

NOVACOLOR UNIVERSITY	04
DIPLOMA	
SEED COURSE	06
DEGREE	
RISE COURSE	07
MASTER	
PEAK COURSE	10
FLOORING COURSE	
WALL2FLOOR	14
2026	
CALENDAR	15
PARTICIPATION AND SAFETY RULES	
	16

A STEP-BY-STEP PROFESSIONAL JOURNEY

Novacolor is a trusted reference point, supporting the professional growth of industry professionals through a wide range of regular training courses. These are held at the **San Marco Group Training Hub**, an innovative facility specifically designed for professional trainings.

These sessions offer valuable opportunities to connect and exchange ideas—key elements for helping clients succeed and stay competitive in the market. They include in-depth exploration of techniques and materials, ongoing updates on products and application systems, and advanced courses focused on the most innovative, high-quality finishes.

photo color trends novacolor 2026

NOVACOLOR UNIVERSITY

The new **NOVACOLOR UNIVERSITY** program introduces a step-by-step journey through the latest on-trend textures, combining theoretical insights with hands-on practice to stay up to date with the market's continuous evolution.

DIPLOMA

SEED

DEGREE

RISE

MASTER

PEAK

NOTE: The training sessions are held in Italian or English.

DIPLOMA

SEED

PROGRAMME

A practical course focusing on a selection of Novacolor decorative finishes: Novacolor primers, Dune&Dune Opaco, IRONic, Marmorino KS, Archi+ Pietra Intonaco, Animamundi, Era a Pennello, Celestia_Wall Painting, Luce, R-Stone

TARGET AUDIENCE

Applicators

VENUE

Training Hub,
Marcon, Venice

DURATION

2 days

PRICE LIST

Registration fee includes a course kit containing the exclusive Novacolor University uniform.

Each course has a maximum of 15 participants, with a minimum of 8 trainees required.



photo color trends novacolor 2026

DEGREE

RISE

PROGRAMME

A practical course focusing on four decorative trends:

DECORATIVE IMPRESSIONISM
 MODERN GEOMETRY
 RUSTIC LIME
 OXIDATION 2.0

TARGET AUDIENCE

Applicators

VENUE

Training Hub,
 Marcon, Venice

DURATION

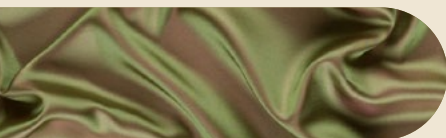
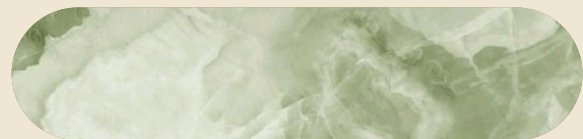
2 days

PRICE LIST

Registration fee includes a course kit containing the exclusive Novacolor University uniform.

Each course has a maximum of 15 participants, with a minimum of 8 trainees required.





PAIRINGS

MATmotion sage & powder pink



PAIRINGS

MATmotion peach & sand



TREND 01

DECORATIVE IMPRESSIONISM

FEATURES

Tactile effects inspired by the world of textiles.

Watercolor effects featuring plays of transparency and light reflection.

Modern palettes blended with soft pastel tones.

TREND 02

MODERN GEOMETRY

FEATURES

Geometric patterns, both smooth and textured.

Raised three-dimensional effects.

A selection of textures, from luminous to matte, inspired by the world of wallpaper.

TREND 03

RUSTIC LIME

FEATURES

Soft, flowing walls with a gentle, enveloping feel.

Textured finishes that are smooth to the touch.

Warm, neutral tones such as off-white, sand, beige, ochre, cream, ivory, and terracotta.



PAIRINGS

Puro_VOC free brown & cream

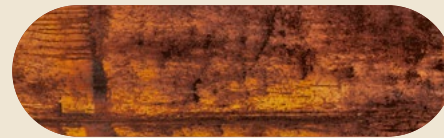


TREND 04

OXIDATION 2.0

FEATURES

New oxidized-effect finishes: metal leaf, wrought iron, and copper and bronze tones inspired by the industrial aesthetic.



PAIRINGS

MATmotion brown & terracotta



MASTER

PEAK

DATES PLANNED FOR 2027

PROGRAMME

A practical course focusing on three interior design trends:

THE SHAPES OF THE EARTH

METALLIC SHINE

CONTRASTS

TARGET AUDIENCE

Applicators

VENUE

Training Hub,
Marcon, Venice

DURATION

Dates available in 2027

photo color trends novacolor 2026



Each course has a maximum of 15 participants, with a minimum of 8 trainees required.





TREND 01

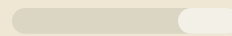
**THE SHAPES
OF THE EARTH**

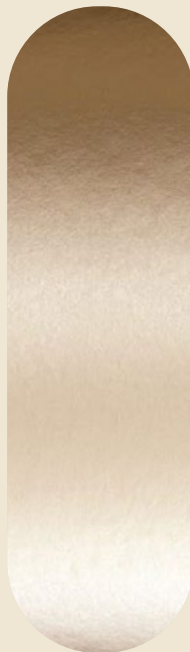
FEATURES

Organic, rustic,
handcrafted textures
inspired by nature.
Warm, earthy color
tones.

PAIRINGS

Puro_VOC free
beige & ivory





TREND 02

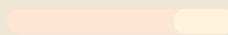
METALLIC SHINE

FEATURES

Glossy finishes, liquid metals, and luminous, reflective effects inspired by the world of iridescent fabrics and metal foils.

PAIRINGS

MATmotion
champagne & sand





TREND 03

THE CONTRASTS

FEATURES

Textures designed by bringing together two opposites, where contrasting decorative elements are harmoniously combined. A focus on the Design Pieces from Novacolor's Signature Collection.

PAIRINGS

MATmotion
brass & sepia



FLOORING COURSE

WALL2FLOOR

PROGRAMME

Intensive course covering all processes Wall2Floor, including Waterproof, microcement and the Decorative system.

TARGET AUDIENCE

Applicators

VENUE

Training Hub,
Marcon, Venice

DURATION

3 days

Each course has a maximum of 10 participants, with a minimum of 5 trainees required.



photo wall2floor by novacolor

2026 CALENDAR

SEED

1st-2nd _____ July
in Venice

PEAK

Dates will be available in 2027

RISE

17-18th _____ September
in Venice

WALL2FLOOR

Please contact your Area
Manager or reach us at
training@novacolor.biz to
apply for a training session.

All courses run from 8.30 am
to 4.30 pm

Please fill in the form on
our website or reach us at
training@novacolor.biz
to apply for a training
session.

Please note: Timetables are
subject to change depending
on the progress of the work
during the course.

PARTICIPATION AND SAFETY RULES

TRAINING HUB

Please contact training@novacolor.biz to apply for a training session.

Cancellations can be made without any fee up to 3 weeks before the booked training dates. After this deadline, the participant will be charged for any applicable hotel cancellation fees.

Enrollment in the course implies automatic acceptance of the Safety Rules regarding access to and conduct within the Training Hub, as presented below.

Ten Safety Rules for On-site Courses
In order to ensure the safety of all participants, each trainee is required to comply with the following rules:



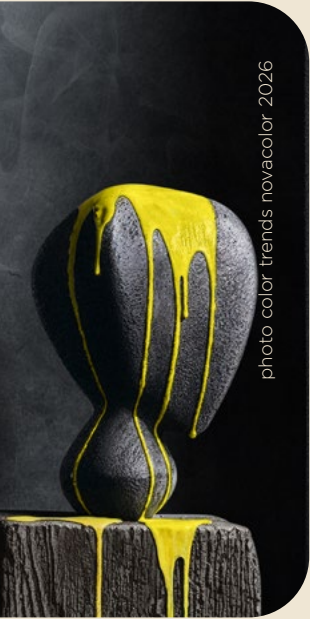


photo color trends novacolor 2026

1. Mandatory PPE – It is mandatory to attend the course with your own Personal Protective Equipment (PPE)
 Safety shoes
 Work gloves
 Safety glasses
 Protective mask (FFP2 or equivalent)
 Long trousers
2. PPE-based access – Access to the training areas is strictly prohibited without the above-mentioned PPE.
3. Minimum age – Access to the courses and to the Training Hub premises is prohibited to persons under 18 years of age.
4. Pregnancy – For health reasons, pregnant women are not permitted to participate in practical activities, either as students, spectators or interpreters
5. Health conditions – Each trainee must declare to be in suitable physical and psychological conditions to take part in the practical activities.
6. Responsible behaviour – Behaviour that could endanger one’s own safety or others’ is prohibited.
7. Alcohol and substances – It is strictly forbidden to attend a course under the influence of alcohol or drugs
8. Hazard reporting – Each course participant is required to immediately report any dangerous situations or accidents to the teaching staff or the person in charge of the venue.
9. Respect for work areas – It is forbidden to enter unauthorized areas or use equipment without prior instruction and supervision.
10. Acceptance of regulations – Participation in the course implies full acceptance of this set of rules. Failure to comply will result in immediate expulsion from the course.

www.en.novacolor.it



Novacolor
University

contact us

training@novacolor.biz
+39 0543 401840

Novacolor Back Office
Via Ulisse Aldrovandi, 10
47122 - Forlì (FC), Italia

Training Center

San Marco Group, Via Alta 10
30020- Marcon (Ve), Italia